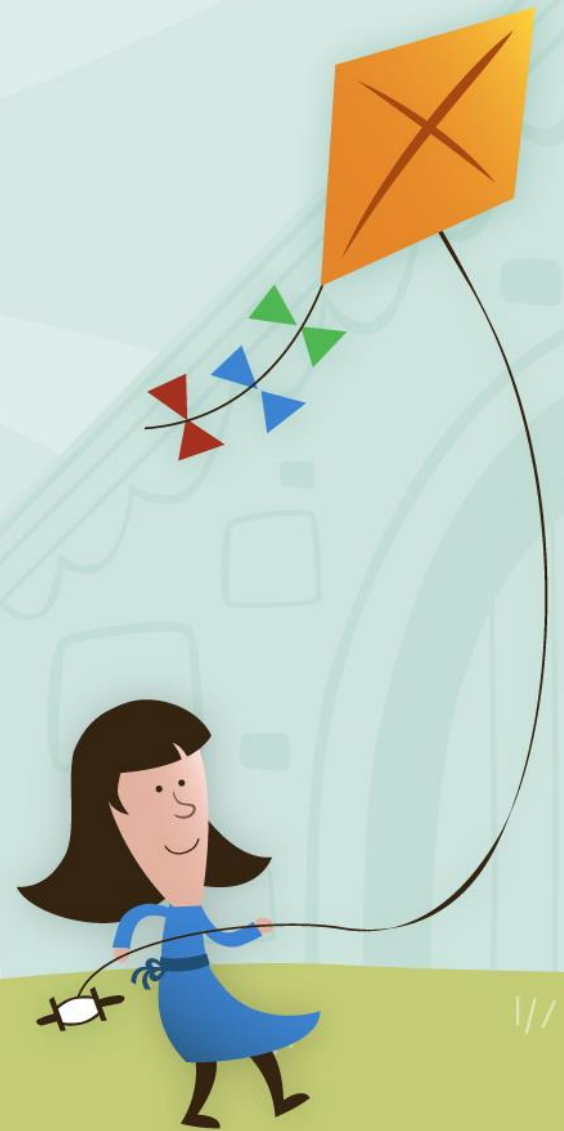


# Aspen Academy

Back to School 2022/2023



# Things to note!

- Important Dates
- Back to School Info!
- Health Information
- Food Services
- Update contact info
- Before and After Care
- Transportation



# Important Dates

August 25 8a-4p

Back to School Days/Grade K-5 Assessments/Pictures

August 26 10a-6p

Back to School Days/Grades K-5 Assessments/Pictures

August 29

Make-up Grades K-5 Assessments 8-3

August 29 8a-3p

Make-up School Pictures

August 29

1<sup>st</sup> Day Middle School (grades 6-8)

August 31

1<sup>st</sup> Day Elementary (grades K-5)

[2022/2023 Calendar](#)



# Back to School/Assessments

## August 25<sup>th</sup> and 26<sup>th</sup>

Scholars will have the opportunity to:

- Drop off supplies
- Meet teacher/complete teacher forms
- Elementary Assessments (watch for sign up email)
- School pictures (students should wear their uniform, make up day October 7<sup>th</sup>)
- MS scholars will receive schedule from advisor



While scholars are testing parents/guardians can head to the gym:

- Daily planner (\$5, cash preferred)
- Infinite Campus log in help
- School Dismissal Manager
- Transportation
- Lunch ordering/Free Reduced applications
- Eagles Nest/Before and After Care
- Health office
- Immunizations







## VACCINATION

Kindergarten and Grade 7 scholars!  
Are these up to date?  
[julie.martini@aspenacademymn.org](mailto:julie.martini@aspenacademymn.org)



Does your scholar need medication at  
school? See form above!  
[gail.setterstrom@aspenacademymn.org](mailto:gail.setterstrom@aspenacademymn.org)



**Health Information-Click images for forms**

# Food Services

- For 22/23 lunches will no longer be free for all scholars, unless you qualify for free/reduced meals
- Lunches are catered in by Lancer Food
- Scholars have the option to order a full lunch or milk only
- All lunches and milk must be ordered by due date listed online
- Gluten Free and Vegetarian options available
- [Application for Educational Benefits 22/23](#). Qualifying applications generate much needed funds for our school, we ask all families to complete an application each year.
- Contact [molly.mcgrath@aspennacademymn.org](mailto:molly.mcgrath@aspennacademymn.org)





## Please complete the Annual Update in Infinite Campus!

Please take the time to complete our yearly annual update. This is important for the school to ensure we have accurate information on your scholar(s). Please login to your [Infinite Campus](#) Parent Portal. On far left, click “more” then click “Online Registration.”

Need help logging in? Contact, [julie.martini@aspenacademymn.org](mailto:julie.martini@aspenacademymn.org).

# Before and After Care/Eagles Nest

- Pre-registration is required
- Calendars are due by dates listed online, we do not have drop-in care
- Morning session 7:00 am - 8:30 am
- Afternoon session 4:00 pm – 5:30 pm
- [Before and After Website Page](#)
- Contact, [diane.hummel@aspenacademymn.org](mailto:diane.hummel@aspenacademymn.org)





# Transportation



- Bus information will be available mid-August
- If your scholar is a walker, please contact Mr. Sandberg for approval
- Update your information in School Dismissal Manager
- Contact,  
[eric.sandberg@aspenacademymn.org](mailto:eric.sandberg@aspenacademymn.org)





**Our Mission** is to provide students with a well-rounded, Core-Knowledge based education which meets the intellectual, creative, and social needs of each child.

**Our Vision** is to prepare our students for future educational opportunities and life in a global society by creating an academically rigorous, literature rich environment where class sizes are small, valuable, and rich in community.



Thank you for being a part of  
**Aspen Community!**

We are looking forward to a  
wonderful new school year!

