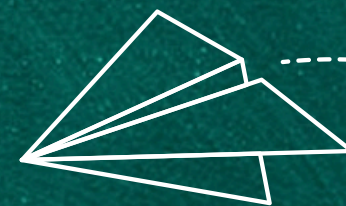
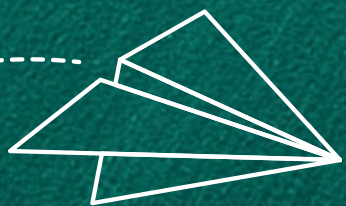




Aspen Academy

Uniform

Guidelines

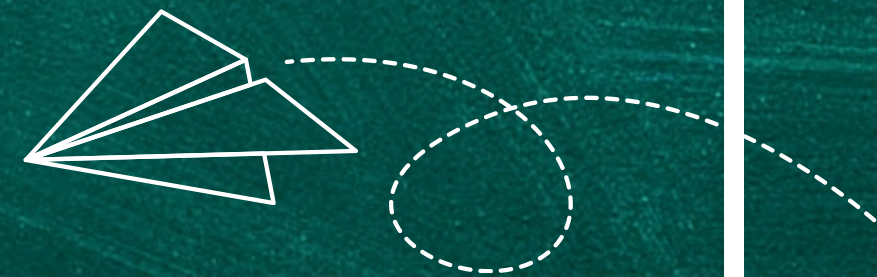




Why do we wear uniforms?

At our charter school, we believe that a polished, clean look is essential to fostering an environment of excellence and unity among our scholars.

1. High Expectations
2. Creating a Focused Learning Environment
3. Promoting Equality & Unity
4. Professionalism
5. School Pride
6. Safety & Security

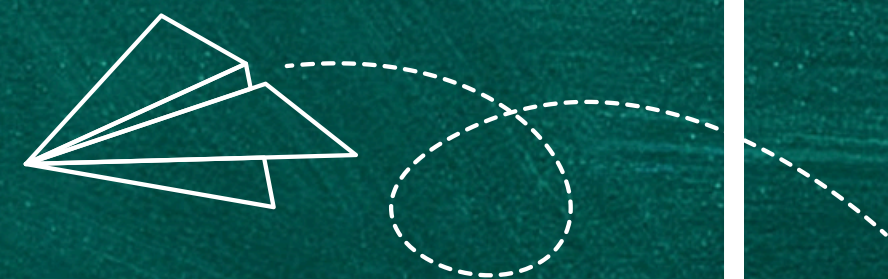




ASPEN

ACADEMY

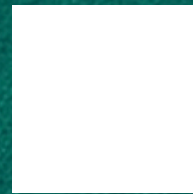
Grades K-5





Collared Tops

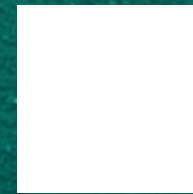
Solids Only



White

Lands End
Evergreen

Black



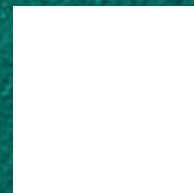
White

Lands End
Evergreen

Black



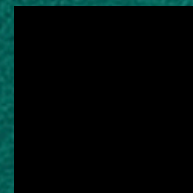
Layering - no hoods, solid colors only



White



Lands End
Evergreen



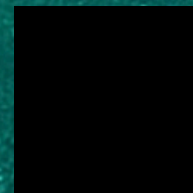
Black



White



Lands End
Evergreen



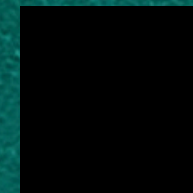
Black



White



Lands End
Evergreen



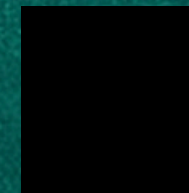
Black



White



Lands End
Evergreen



Black

Bottoms

Pants

Flat or Pleated Front
Fitted or Elastic Waist
Twill, cotton, cotton-blend

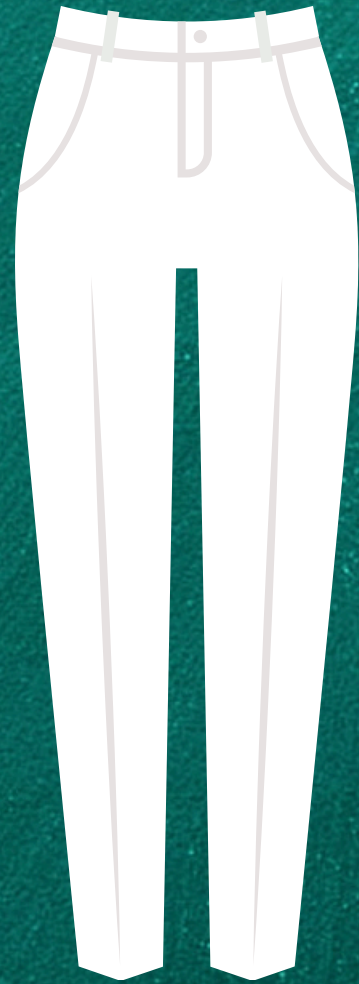


Khaki



Black

Pants / Trouser



Khaki



Black

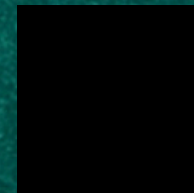


Skirts / Skorts

Must have solid colored
tights,
leggings or shorts worn
underneath



Khaki



Black



Aspen
Plaid

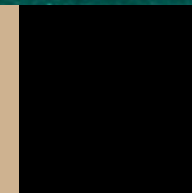


Shorts

must be at a fingertip or
longer
when hands are at side



Khaki



Black

Dresses - Girls Only

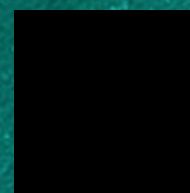


Polo Dress

Fingertips (or longer) when hands are at the side
Long or short sleeve
Must have solid colored white, black or grey tights
or leggings or shorts worn underneath.



Lands End
Evergreen



Black



Aspen Plaid



Khaki



Jumper

Collared shirt or turtleneck must be solid
colored white, black, or Lands' End Evergreen
Fingertips (or longer) when hands are at the side
Must have a collared shirt or turtleneck
underneath
Must have solid colored white, black or grey
tights or leggings or shorts worn underneath

Shoes & Socks



Must wear socks WITH shoes

Closed-toe, Closed-back non-skid shoes

No lights or wheels

No sandals, Crocs, clogs, open-toe shoes, flip-flops, or hybrids

Heels must be 1 inch or less.

No boots higher than the ankle.

For safety reasons, all shoes must have a tread on the sole.

It is recommended, but not required, to have your child bring a dedicated pair of shoes for physical education class that they can leave at school.

PE shoes may be any appropriate athletic shoe.



Spirit wear



Aspen logo t-shirt, sweatshirts, flannel pants, tunic, tracksuit.

Must be Aspen approved Spirit Wear

May only be worn on designated Spirit Wear days

Only pants may be worn under tunics



Aspen Plaid

Accessories

Should be worn to match the uniform.

No obtrusive hair/body accessories with distracting decorations, sequins, glitter, costume accessories, jewels, and/or beading.

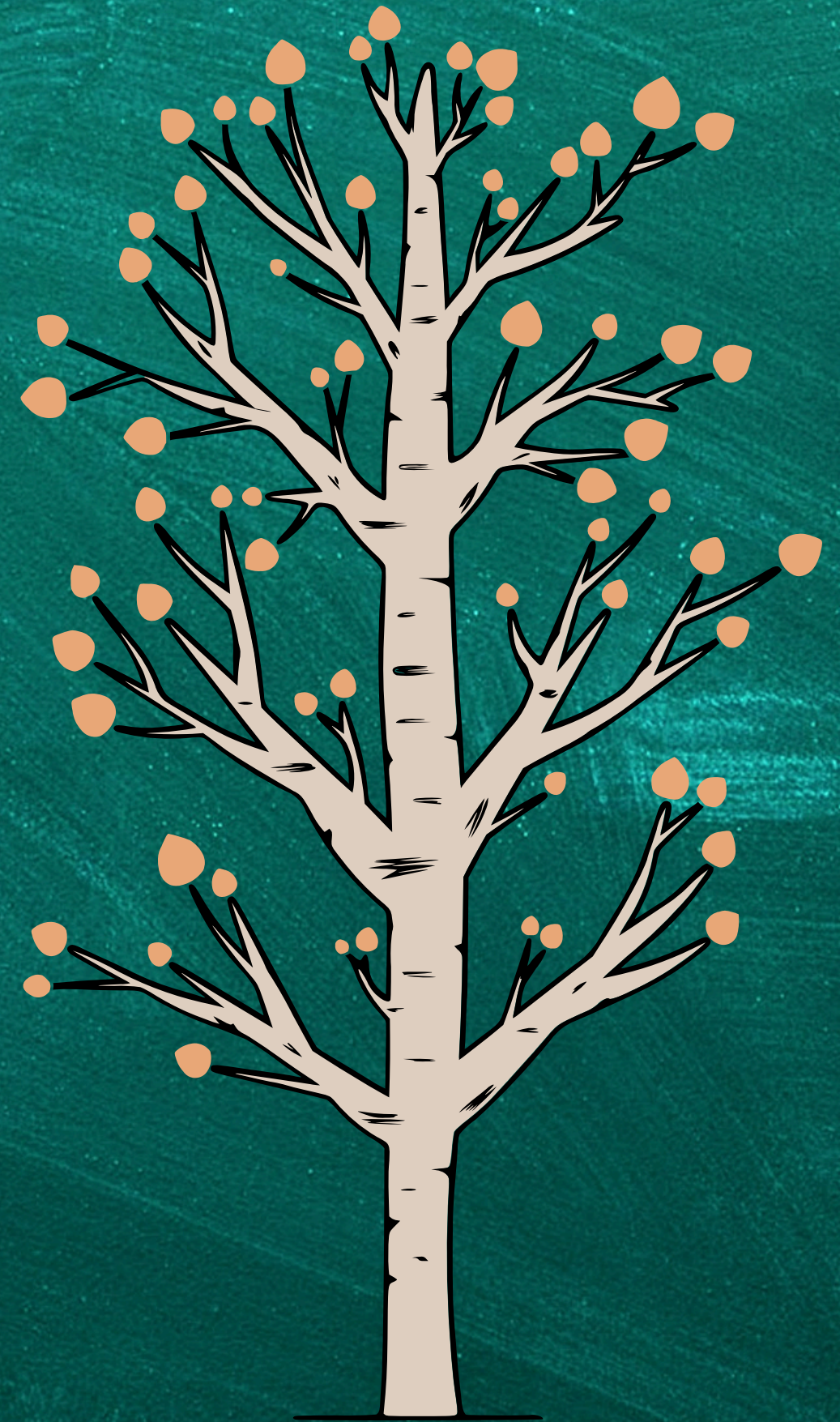
Items MUST be Aspen Uniform color (solid: black, white, Lands' End evergreen, Aspen plaid).

Personal face coverings should not include any vulgarity, writing or be a disruption to class.

Cultural Dress

Religious/cultural head coverings need to be a solid color without distracting decorations.

For religious reasons, long skirts instead of uniform bottoms may be worn but must be a uniform color.



NOT ALLOWED IN ASPEN ACADEMY

- Blue jeans, corduroys, capris, yoga pants, leggings with nothing worn over them & sweatpants
- Baggy or oversized pants & bicycle shorts, cut-offs, short shorts or boxer shorts
- Winter “gear” – Boots, jackets, hats, caps, & hoods. Students must have uniform-approved sweaters, vests, or cardigans.
- Shorts, skorts, skirts, or jumpers that are too short to reach past fingertips when arms are at side.
- Clothing that has become or is torn, has holes worn through, or is otherwise unkempt in appearance.
- Obtrusive accessories or accessories that cause unnecessary distraction (accessories worn should match the uniform).
- Hats, including but not limited to, stocking caps, ball caps, & hoods must be removed before entering the building

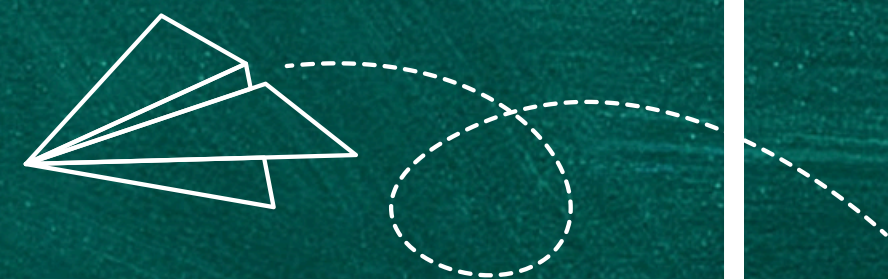




ASPEN

ACADEMY

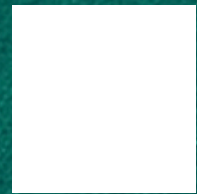
Grades 6-8





Collared Tops

Solids Only



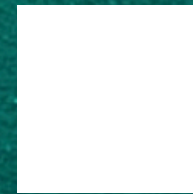
White / Grey



Lands End
Evergreen



Black



White / Grey



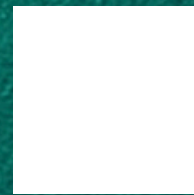
Lands End
Evergreen



Black



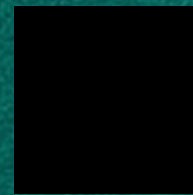
Layering - no hoods, solid colors only



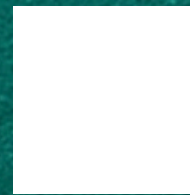
White / Grey



Lands End
Evergreen



Black



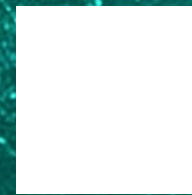
White / Grey



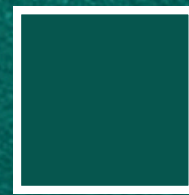
Lands End
Evergreen



Black



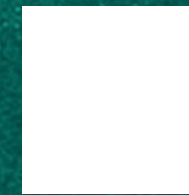
White / Grey



Lands End
Evergreen



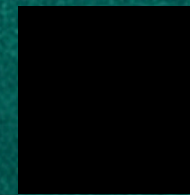
Black



White / Grey



Lands End
Evergreen



Black

Bottoms

Pants

Flat or Pleated Front
Fitted or Elastic Waist
Twill, cotton, cotton-blend



Cargo Pant

Straight Leg or Skinny Legs
No Wide Leg



Pants / Trouser



Shorts

must be at a fingertip or longer
when hands are at side

Skirts / Skorts

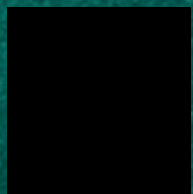
Must have solid colored
tights,
leggings or shorts worn
underneath



Grey



Khaki



Black



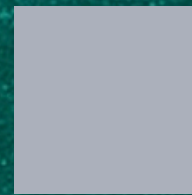
Grey



Khaki



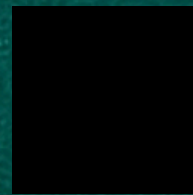
Black



Grey



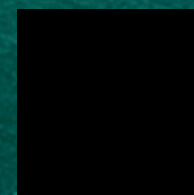
Khaki



Black



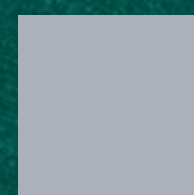
Khaki



Black



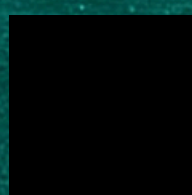
Aspen
Plaid



Grey



Khaki



Black

Dresses - Girls Only

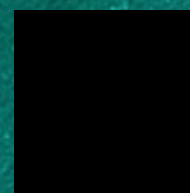


Polo Dress

Fingertips (or longer) when hands are at the side
Long or short sleeve
Must have solid colored white, black or grey tights
or leggings or shorts worn underneath.



Lands End
Evergreen



Black



Aspen Plaid



Khaki



Jumper

Collared shirt or turtleneck must be solid
colored white, black, or Lands' End Evergreen
Fingertips (or longer) when hands are at the side
Must have a collared shirt or turtleneck
underneath
Must have solid colored white, black or grey
tights or leggings or shorts worn underneath

Shoes & Socks



Must wear socks WITH shoes

Closed-toe, Closed-back non-skid shoes

No lights or wheels

No sandals, Crocs, clogs, open-toe shoes, flip-flops, or hybrids

Heels must be 1 inch or less.

No boots higher than the ankle.

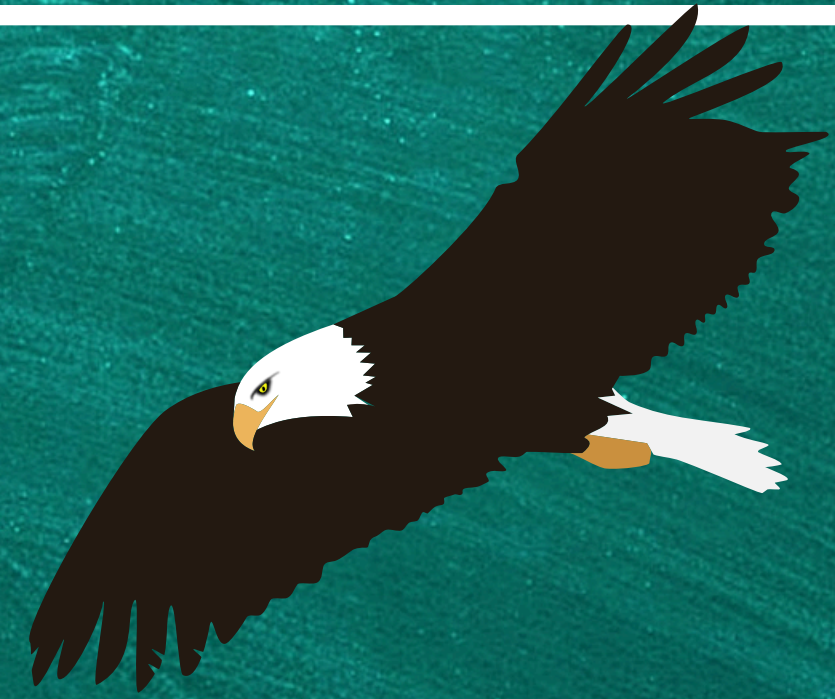
For safety reasons, all shoes must have a tread on the sole.

It is recommended, but not required, to have your child bring a dedicated pair of shoes for physical education class that they can leave at school.

PE shoes may be any appropriate athletic shoe.



Spirit wear



Aspen logo t-shirt, sweatshirts, flannel pants, tunic, tracksuit.

Must be Aspen approved Spirit Wear

May only be worn on designated Spirit Wear days

Only pants may be worn under tunics



Aspen Plaid

Accessories

Should be worn to match the uniform.

No obtrusive hair/body accessories with distracting decorations, sequins, glitter, costume accessories, jewels, and/or beading.

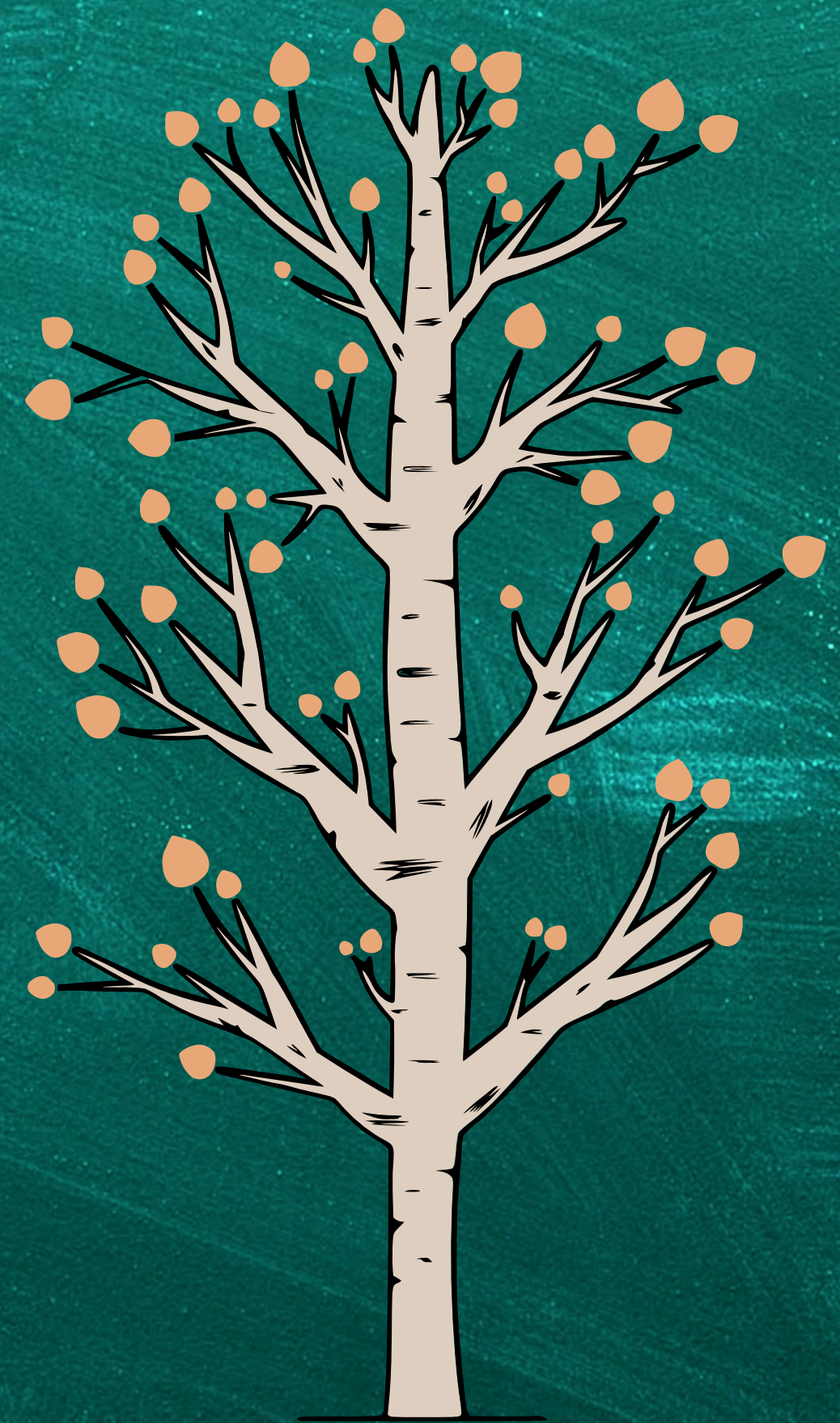
Items MUST be Aspen Uniform color (solid: black, white, Lands' End evergreen, Aspen plaid).

Personal face coverings should not include any vulgarity, writing or be a disruption to class.

Cultural Dress

Religious/cultural head coverings need to be a solid color without distracting decorations.

For religious reasons, long skirts instead of uniform bottoms may be worn but must be a uniform color.



NOT ALLOWED IN ASPEN ACADEMY

- Blue jeans, corduroys, capris, yoga pants, leggings with nothing worn over them & sweatpants
- Baggy or oversized pants & bicycle shorts, cut-offs, short shorts or boxer shorts
- Winter “gear” – Boots, jackets, hats, caps, & hoods. Students must have uniform-approved sweaters, vests, or cardigans.
- Shorts, skorts, skirts, or jumpers that are too short to reach past fingertips when arms are at side.
- Clothing that has become or is torn, has holes worn through, or is otherwise unkempt in appearance.
- Obtrusive accessories or accessories that cause unnecessary distraction (accessories worn should match the uniform).
- Hats, including but not limited to, stocking caps, ball caps, & hoods must be removed before entering the building



Where can I buy uniforms for my scholar?

Below are some links / Ideas

Girls (Old Navy) Pointe Pant: [LINK](#)
Girls (Old Navy) Short Sleeve Polo Shirt: [LINK](#)
Girls (Old Navy) Long Sleeve Polo Shirt: [LINK](#)
Girls (Old Navy) Button up Cardigan: [LINK](#)
Girls (H&M) Cardigan: [LINK](#)
Girls (H&M) 2 Pack Polo, Short Sleeve: [LINK](#)
Girls (LandsEnd) Box Pleat Skirt: [LINK](#)
Girls (LandsEnd) Cotton Modal Sweater Vest: [LINK](#)
Girls (LandsEnd) Short Polo Dress: [LINK](#)
Girls (LandsEnd) Jumper Top of Knee: [LINK](#)
Girls (LandsEnd) Ponte Pleat Jumper: [LINK](#)
Girls (Schoolbelles) Tunic Jumper: [LINK](#)
Girls (Target) Short Sleeve Polo: [LINK](#)
Girls (Target) Long Sleeve Polo: [LINK](#)
Girls (Target) Straight Fit Pants: [LINK](#)

Boys (Old Navy) Pant: [LINK](#)
Boys (Old Navy) Short Sleeve Polo: [LINK](#)
Boys (Old Navy) Long Sleeve Polo: [LINK](#)
Boys (Old Navy) V-Neck Sweater: [LINK](#)
Boys (H&M) 2 Pack Polo, Short Sleeve: [LINK](#)
Boys (H&M) Twill Chinos: [LINK](#)
Boys (H&M) Quarter Zip Sweater: [LINK](#)
Boys (LandsEnd) Cotton V-Neck Sweater: [LINK](#)
Boys (LandsEnd) Cotton Modal Sweater Vest: [LINK](#)
Boys (LandsEnd) Elastic Waist Pull on Pant: [LINK](#)
Boys (LandsEnd) Iron Knee Pant: [LINK](#)
Boys (Target) Short Sleeve Polo: [LINK](#)
Boys (Target) Long Sleeve Polo: [LINK](#)
Boys (Target) Straight Fit Pants: [LINK](#)

Note:

Green is only purchasable at Lands End**

Aspen Plaid is only available at Donalds or Schoolbelles - it does not have yellow in it**

